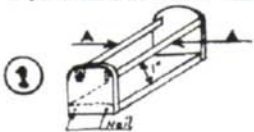
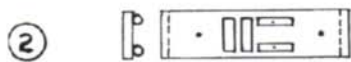




RIVERINA EXPRESS PASSENGER CAR-CONSTRUCTION KIT.



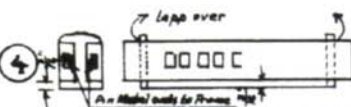
1 Nail Ends of car floor together use two nails each end. Sand braces to correct length. Glue each end of nail together. Clearance should be 1". Drive nails through ends into braces. Paint inside of frame black stain.



2 Glue on Transformer boxes and Cylinders on space marked. To keep cylinders secure drive nail in holes provided. Paint underframe & sides with flat black paint or laquer.



3 Cement Celluloid strip round edges with fast drying transparent cement place inside over windows and let a heavy object rest on it for at least 1/2 hour. Repeat same process on other side.



4 Place metal carside over frame bend over the other end with flat object tight and stretch well before bending, press down side near corner. Pin down with three tacks through the holes. Metal side should be 3/16" from bottom of frame.



5 Tack down Roof on ends as shown. Be sure Roof is well centered on both sides before driving tacks right down. Hold tacks with slot lead papers at right angles to Roof.



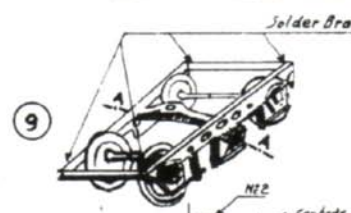
6 Glue on Ends under Roof overlapping metal sides but sand first to correct shape. Tack on after cementing.



7 Cement Diaphragms be sure to centre correctly press down and drive Tacks in holes provided on Diaphragms (End doors) (Corridor on)

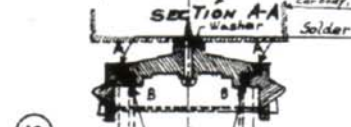


8 Touch up all tacks in tuscan red. Roof tacks in silver or gray.



9 Now comes the most important Job, Assembling and soldering the Bogies. Take two pairs of wheels on the ends of the axles and insert them into the axleboxes put the two sideframes with the axles in position upside down press them against a right angle 90° and solder braces on each end. Reverse the position and repeat the process. Now put the Job right up and solder Braces on top of sideframes. Now place the Bogie on a short section of rails, be sure all 4 wheels are level on the rails. Place the Bolster on the side-frame brackets, centre, press down firm and solder on each end at A.A. Turn upside down again and fill Cavities with solder B.B. Repeat process on 2nd Bogie.

Laquer your Bogies with Atomizer or Spray Gun in flat black.



10 Make yourself a mounting jig of 1/2" board as shown. Place your carbody upside down in the jig and screw on Couplers first then Bogies as in each N12 1 & 2.

Now your job should be ready for testing and if aligned properly your car should run flawlessly.

